

MV-CA050-12GC

5 MP 2/3" CMOS GigE Area Scan Camera



GEN*i*CAM

GigE
VISION

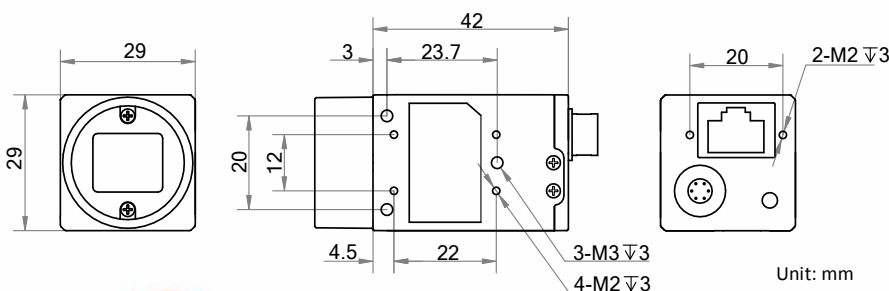
Introduction

MV-CA050-12GC camera adopts Sony® IMX264 sensor to provide high-quality image. It uses GigE interface to transmit non-compressed images in real time with max. frame rate reaching 24.1 fps.

Key Feature

- Adopts GigE interface and max. transmission distance of 100 meters without relay.
- Supports auto and manual adjustment for exposure control, LUT, Gamma correction, etc.
- Supports hardware trigger, software trigger, free run, etc.
- Compatible with GigE Vision Protocol V2.0, GenICam Standard, and third-party software based on these protocol and standard.

Dimension



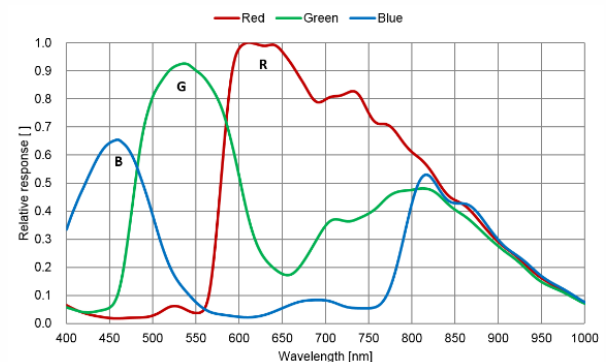
Available Model

MV-CA050-12GC

Applicable Industry

Electronic semiconductor, factory automation, food and beverage, medical packaging, etc.

Sensor Quantum Efficiency



Specification

Model	MV-CA050-12GC
Camera	
Sensor type	CMOS, global shutter
Sensor model	Sony® IMX264
Pixel size	3.45 μm × 3.45 μm
Sensor size	2/3"
Resolution	2448 × 2048
Max. frame rate	24.1 fps@ 2448 × 2048
Dynamic range	72 dB
SNR	40.2 dB
Gain	0 dB to 17 dB
Exposure time	UltraShort exposure mode: 1 μs to 14 μs Normal exposure mode: 15 μs to 10 sec
Exposure mode	Off/Once/Continuous exposure mode
Mono/color	Color
Pixel format	Mono 8/10/12, Bayer RG 8/10/10p/12/12p, YUV422Packed, YUV422_YUYV_Packed, RGB 8, BGR 8
Binning	Supports 1 × 1, 1 × 2, 2 × 1, 1 × 4, 4 × 1, 2 × 2, 2 × 4, 4 × 2, 4 × 4
Decimation	Supports 1 × 1, 2 × 2
Reverse image	Supports horizontal and vertical reverse image output
Electrical feature	
Data interface	Gigabit Ethernet, compatible with Fast Ethernet
Digital I/O	6-pin Hirose connector provides power and I/O, including opto-isolated input × 1 (Line 0), opto-isolated output × 1 (Line 1), bi-directional non-isolated I/O × 1 (Line 2).
Power supply	9 VDC to 24 VDC, supports PoE
Power consumption	Typ. 3.2 W@12 VDC
Mechanical	
Lens mount	C-Mount
Dimension	29 mm × 29 mm × 42 mm (1.1" × 1.1" × 1.7")
Weight	Approx. 88 g (0.19 lb)
Ingress protection	IP30 (under proper lens installation and wiring)
Temperature	Working temperature: 0 °C to 50 °C (32 °F to 122 °F) Storage temperature: -30 °C to 70 °C (-22 °F to 158 °F)
Humidity	20% to 80% RH, non-condensing
General	
Client software	MVS or third-party software meeting with GigE Vision Protocol
Operating system	32/64-bit Windows XP/7/10, 32/64-bit Linux and 64-bit MacOS
Compatibility	GigE Vision V2.0, GenICam
Certification	CE, RoHS, KC

HIKROBOT

Hangzhou Hikrobot Co., Ltd.
en.hikrobotics.com

© Hangzhou Hikrobot Co., Ltd. All Rights Reserved.

Hangzhou Hikrobot does not tolerate any infringement. Any organization or individual may not imitate or reproduce in whole or in part of the content. The data herein is based on Hikrobot's internal evaluation. Actual data may vary depending on specific configuration and operating condition. The information herein is subject to change without notice. All the content has been checked conscientiously. Nevertheless, Hikrobot shall not be liable to damages resulting from errors, inconsistencies or omissions.